



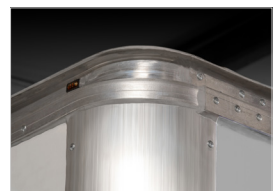
Base model shown with added options

## Dependable Efficiency for the Demanding Workday

Tough and sturdy, the Wabash Cargo XL Body featuring DuraPlate Technology is ideal for effortlessly carrying cargo on shorter, multi-delivery routes. With the ability to turn tight corners, the Cargo XL Body is the solution for quicker delivery to just about anywhere.

### Features

- DuraPlate sidewalls for extreme durability and damage resistance with increased cubes
- One Piece Header System eliminates corner caps, increasing front wall strength
- Flat floor for maximized cargo space
- Step bumper for easy and safe cargo entry
- V-groove threshold protects rear entry and eases cleaning
- Solutions available for traditional, alternative fuel and electrified chassis



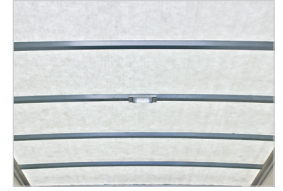
## Specifications

| WIDTH                                           | LENGTH | HEIGHT |     |     |
|-------------------------------------------------|--------|--------|-----|-----|
|                                                 |        | 79"    | 85" | 91" |
| <b>86"</b><br><small>(Transit only) DRW</small> | 12'    | •      | •   |     |
|                                                 | 14'    | •      | •   |     |
|                                                 | 15'    | •      | •   |     |
| <b>96"</b><br><small>DRW</small>                | 12'    | •      | •   |     |
|                                                 | 14'    | •      | •   |     |
|                                                 | 15'    |        | •   | •   |
|                                                 | 16'    |        | •   | •   |
|                                                 | 17'    |        | •   | •   |

- Available sizes limited by chassis type



Wind fairing on 85" high model



Translucent roof



Backup camera

|                        |                                                                                                                                                                                                                                           |
|------------------------|-------------------------------------------------------------------------------------------------------------------------------------------------------------------------------------------------------------------------------------------|
| <b>Chassis Type</b>    | <ul style="list-style-type: none"> <li>• Cutaway</li> </ul>                                                                                                                                                                               |
| <b>Truck Body Type</b> | <ul style="list-style-type: none"> <li>• Dry freight</li> </ul>                                                                                                                                                                           |
| <b>Sidewalls</b>       | <ul style="list-style-type: none"> <li>• 6mm DuraPlate white panels</li> </ul>                                                                                                                                                            |
| <b>Front</b>           | <ul style="list-style-type: none"> <li>• FRP Solid bulkhead, setback 4"</li> <li>• FRP white front wall</li> <li>• One-piece aluminum header</li> <li>• Extruded-aluminum radius vertical front corners</li> </ul>                        |
| <b>Rear Frame</b>      | <ul style="list-style-type: none"> <li>• Painted galvanized steel</li> <li>• 14 ga. header</li> <li>• 12 ga. corner posts</li> <li>• 10 ga. one-piece V-groove threshold</li> <li>• Internal gussets</li> </ul>                           |
| <b>Rear Door</b>       | <ul style="list-style-type: none"> <li>• Premium roll-up with 6" header</li> <li>• Maximum Security (MS) lock</li> </ul>                                                                                                                  |
| <b>Floor</b>           | <ul style="list-style-type: none"> <li>• 18mm hardwood plywood flat floor</li> </ul>                                                                                                                                                      |
| <b>Subframe</b>        | <ul style="list-style-type: none"> <li>• 3" formed "C"-channel cross members on 16" C/L</li> <li>• High strength 2" channel longills</li> <li>• High strength puck mounted bracket system</li> <li>• Pre-coated understructure</li> </ul> |
| <b>Roof</b>            | <ul style="list-style-type: none"> <li>• One-piece .032" aluminum skin</li> <li>• Galvanized-steel anti-sag roof bows on 24" C/L</li> </ul>                                                                                               |
| <b>Interior Lights</b> | <ul style="list-style-type: none"> <li>• LED dome light with rear switch - hot wired</li> </ul>                                                                                                                                           |

|                        |                                                                                                                                                                                                                                                                                    |
|------------------------|------------------------------------------------------------------------------------------------------------------------------------------------------------------------------------------------------------------------------------------------------------------------------------|
| <b>Exterior Lights</b> | <ul style="list-style-type: none"> <li>• LED clearance lights</li> <li>• LED oval taillights with integrated back-up lights - surface mounted</li> </ul>                                                                                                                           |
| <b>Bumper</b>          | <ul style="list-style-type: none"> <li>• Pooched step</li> </ul>                                                                                                                                                                                                                   |
| <b>Warranty</b>        | <ul style="list-style-type: none"> <li>• 1-year white surface and leaks</li> <li>• 3-year/36,000-mile limited bulkhead-to-bumper warranty</li> <li>• 5-year limited structural warranty (roof, wall and floor structure)</li> <li>• See our warranty policy for details</li> </ul> |

### Options

|                      |                                                                                                                                                                                                       |
|----------------------|-------------------------------------------------------------------------------------------------------------------------------------------------------------------------------------------------------|
| <b>Front</b>         | <ul style="list-style-type: none"> <li>• Wind fairing</li> <li>• Tall cab access door with roof conversion</li> </ul>                                                                                 |
| <b>Roof</b>          | <ul style="list-style-type: none"> <li>• Translucent roof</li> </ul>                                                                                                                                  |
| <b>Floor</b>         | <ul style="list-style-type: none"> <li>• 2" x 6" dense pine, 1-1/8" laminated hardwood and inverted T extruded aluminum non-slip floor</li> </ul>                                                     |
| <b>Rear Door</b>     | <ul style="list-style-type: none"> <li>• Full opening swing door, 48-1/2" or 60" wide roll-up door</li> </ul>                                                                                         |
| <b>Side Door</b>     | <ul style="list-style-type: none"> <li>• 32" swing door with aluminum step well</li> <li>• 30" sliding door with aluminum stepwell</li> <li>• 30" or 42" swing side door with stirrup step</li> </ul> |
| <b>Cargo Control</b> | <ul style="list-style-type: none"> <li>• Bonded and riveted E-track</li> </ul>                                                                                                                        |
| <b>Shelving</b>      | <ul style="list-style-type: none"> <li>• Fold-up shelving</li> </ul>                                                                                                                                  |
| <b>Liftgates</b>     | <ul style="list-style-type: none"> <li>• Contact your representative for more information</li> </ul>                                                                                                  |