



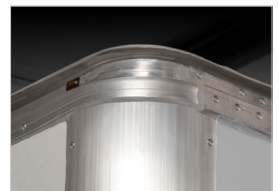
Base model shown with added options

All-around Efficiency

When it comes to transporting perishable cargo, the Wabash Acutherm Refrigerated Freight Body is the go-to for protecting products and maximizing operating efficiency. Available in a variety of sizes and configurations, the Acutherm Refrigerated Freight Body is the solution for the rigorous demands of multi-stop refrigerated delivery.

Features

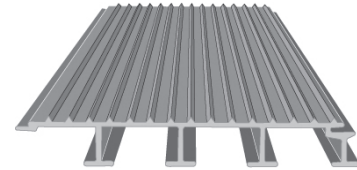
- Improved insulation process reduces weight and increases thermal efficiency to positively impact your bottom line
- Single and multi-temp options meet unique cargo requirements
- One Piece Header System eliminates corner caps, increasing front wall durability
- Smooth, seamless interior liner for a brighter, more durable food grade surface
- Overall design significantly reduces leak points and water intrusion for longer insulation life
- Solutions available for traditional, alternative fuel and electrified chassis



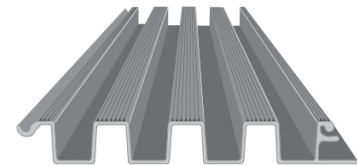
Specifications

WIDTH	LENGTH	HEIGHT					
		79"	85"	91"	97"	103"	109"
96"	12'	•	•	•			
	14'	•	•	•			
	16'	•	•	•	•		
	18'		•	•	•		
	20'		•	•	•	•	
	22'		•	•	•	•	•
	24'		•	•	•	•	•
	26'			•	•	•	•
102"	28'			•	•	•	
	18'		•	•	•		
	20'		•	•	•	•	
	22'		•	•	•	•	•
	24'		•	•	•	•	•
	26'			•	•	•	•
	28'			•	•	•	•

• Available sizes limited by chassis type



Anti-skid interveted-T floor



Anti-skid box-type reefer



Folding reefer steps



Reefer service platform

Chassis Type	• Cab
Truck Body Type	• Insulated
Available Sidewalls	• .040" smooth aluminum pre-painted white panels
Lining	• Seamless, anti- microbial composite walls, roof and front wall.
Scuff	• 6" corrugated aluminum -sides • 6" smooth aluminum - front
Insulation	• 3" foam - roof • 3" foam - side walls • 4" foam - front wall, floor
Front	• FiberPanel® (FRP) white front wall • One Piece Header System • Extruded-aluminum radius vertical front corners
Rear Frame	• Painted galvanized steel • 14 ga. header • 12 ga. corner posts • 10 ga. one-piece V-groove threshold • Internal gussets
Rear Door	• High-temp insulated • Maximum Security (MS) lock
Floor	• Smooth box type extruded aluminum floor
Subframe	• 3" I-beam cross members on 12" C/L • 4" I-beam longills • Full-perimeter steel reinforcing aluminum rub rail • Pre-coated understructure

Roof	• One-piece .032" aluminum skin • Galvanized-steel anti-sag roof bows on 24" C/L
Interior Lights	• LED dome light with rear switch - hot wired
Exterior Lights	• LED clearance lights • Existing chassis taillights
Bumper	• Pooched ICC
Warranty	• 1-year white surface and leaks • 3-year/36,000-mile limited bulkhead-to-bumper warranty • 5-year limited structural warranty (roof, wall and floor structure) • See our warranty policy for details

Options

Front	• Refrigeration unit installation (single-temp) • Refrigeration unit access steps (4) with grab handle
Floor	• Extruded aluminum box-type reefer floor - smooth or non-skid
Side Doors	• Single-swing (36" x 73") with stirrup step and grab handle per required location
Scuff	• 12" corrugated aluminum
Cargo Control	• Riveted E-track per required location
Liftgates	• Contact your representative for more information